



# SGS ENGINEERING WORKS

**A SHEET METAL PRESS TOOL PARTS MANUFACTURING COMPANY**

Welcoming you to the way of manufacturing High Quality Press Tool  
Sheet Metal Parts with a Certified Systematic Approach by a highly  
Dedicated & Enthusiastic Team !!!

# Let's Dive In

## A LITTLE INTRODUCTION TO OUR COMPANY



A young technical entrepreneur, **Mr. Vijay Sethi**, having vast experience of academics as well as the manufacturing sectors(Escorts-Yamaha) **started SGS Engineering Works in 1996** in Govindpuri, Kalkaji in New Delhi. With high Quality Power Press tool the company was shifted to **HSI IDC, Faridabad** to expand & enhance the manufacturing of Sheet Metal Products.

Within a short span of time the company graduated its facilities for manufacturing the same for various industries like automobiles, electronics & electrical appliances. The organisation right from its inception paid attention to quality of its products and was successful in carving a niche in both domestic and export markets.

To facilitate quality at all stages, the management has established a quality management system which has been certified to **IATF standards.**



# As of Today

## **Production along with Tooling of Over 350 different Sheet Metal Components**



- Manufacturing of Brackets & Beams for Maruti Suzuki India Ltd.(MSIL). Green Certified by MACE, a subsidiary of MSIL.
- Spare Parts Manufacturing of Brake Assembly of both passenger & commercial vehicles.
- Inland Sale & Export of Over 50 varieties of Kit Sets for Commercial Vehicles Foundation Brakes developed at SGS.
- Manufacturing components from CRC, HRC, Spring Steel, Stainless Steel etc. with thickness ranging from 0.4mm to 5mm.

## **Team of over 30 Dedicated & Hardworking Associates guided by Bright Minded Team of 8 Staff Members**



- IATF Certified Quality Management System(QMS) implemented by highly effective team of Staff Members.
- Trained Associates Operating at 22 Power Presses ranging from 05 to 70 Ton at two Manufacturing Sites of the Organisation.
- Associates ensuring Proper Quality of Products to Customer via thorough Final Inspection as guided by the QMS.
- Expert Staff Members & Associates performing Manufacturing, Assembly & Repair of Quality Press Tools handled at Dedicated Tool-Room In-House.
- Expert Out-HouseSupport available On time, Every time for Heat Treatment, Tooling & Surface Treatment Processes as required.

## **Two Manufacturing Units situated in the State of Haryana, India**



- The Manufacturing Sites(Shed No. 82-C & 28-B) are situated in HSIIDC Region of Sector-31, Faridabad, Haryana-121003, India.
- Along with Press Shops at Both Sites, dedicated Tool-Room available at each site with guidance from Out-Source Experts in field for prompt support & effective response.
- Out-Source processes by dedicated Suppliers with State-of-Art Machinery for Heat Treatment & Surface Treatment.
- Expert Staff ensuring Quality by means of In-House Standard Room with an array of Inspection & Testing Equipments.

# Tracing Our Roots

## GLIMPSE OF OUR HISTORY

SGS Engineering Works starts it's Operations at Govind Puri, Kalkaji, New Delhi.

1996

Moved on Rent to Haryana-Faridabad, Sector-27 from Kalkaji, Delhi

2001

Added Site (Shed No. 82-C) in the same Sector-31, HSIIDC, Faridabad, Harayana-121003

2015

Purchased First Shed(No. 28-B) in Faridabad at Sector 31, HSIIDC Industrial Estate

First ISO 9001 Certification (ISO 9001-2000)

2003

Addition of Floor at Unit I for Stores & Final Inspection along with Lift

2017

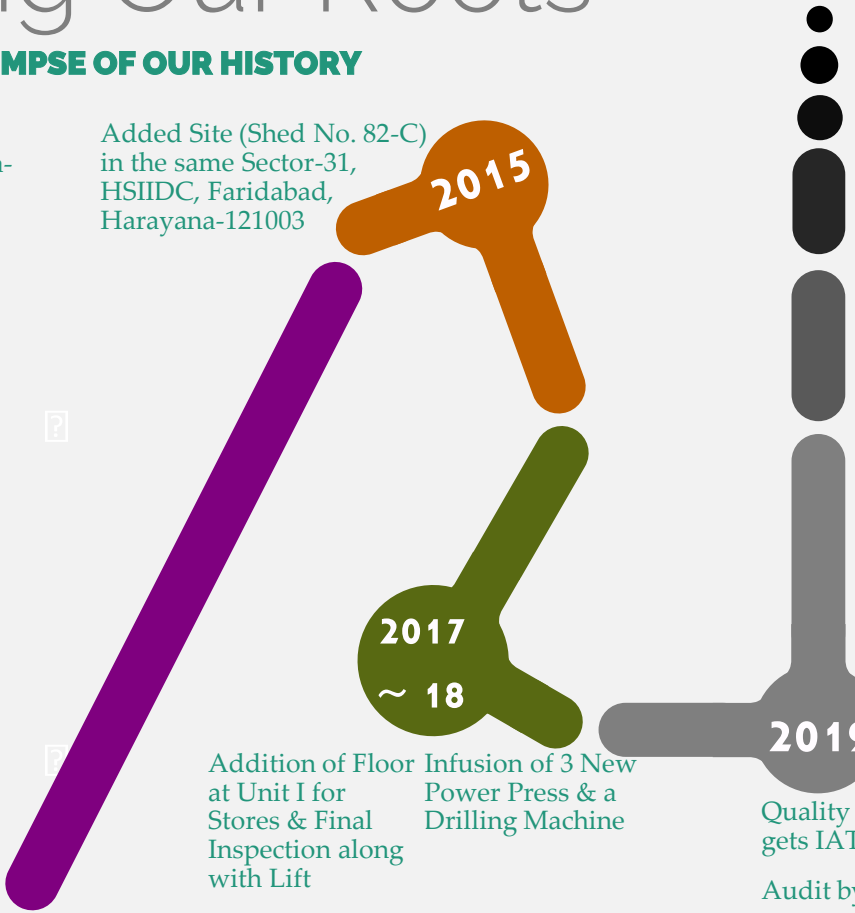
~ 18

Infusion of 3 New Power Press & a Drilling Machine

2019

Quality Management System gets IATF Certification.

Audit by TÜV SÜD.



# Our Prestigious Clientele

**MORE QUALITY ALONG WITH QUANTITY; ON-TIME EVERY-TIME**



**ROULUNDS BRAKING**  
A Member of MAT Holdings, Inc.

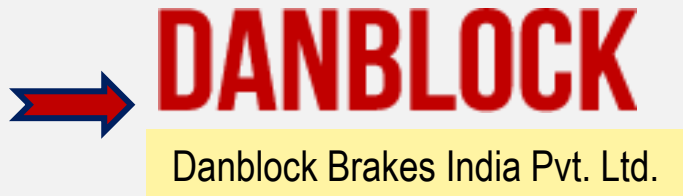


**MAT FRICTION**  
**GROUP**  
A Member of MAT Holdings, Inc.



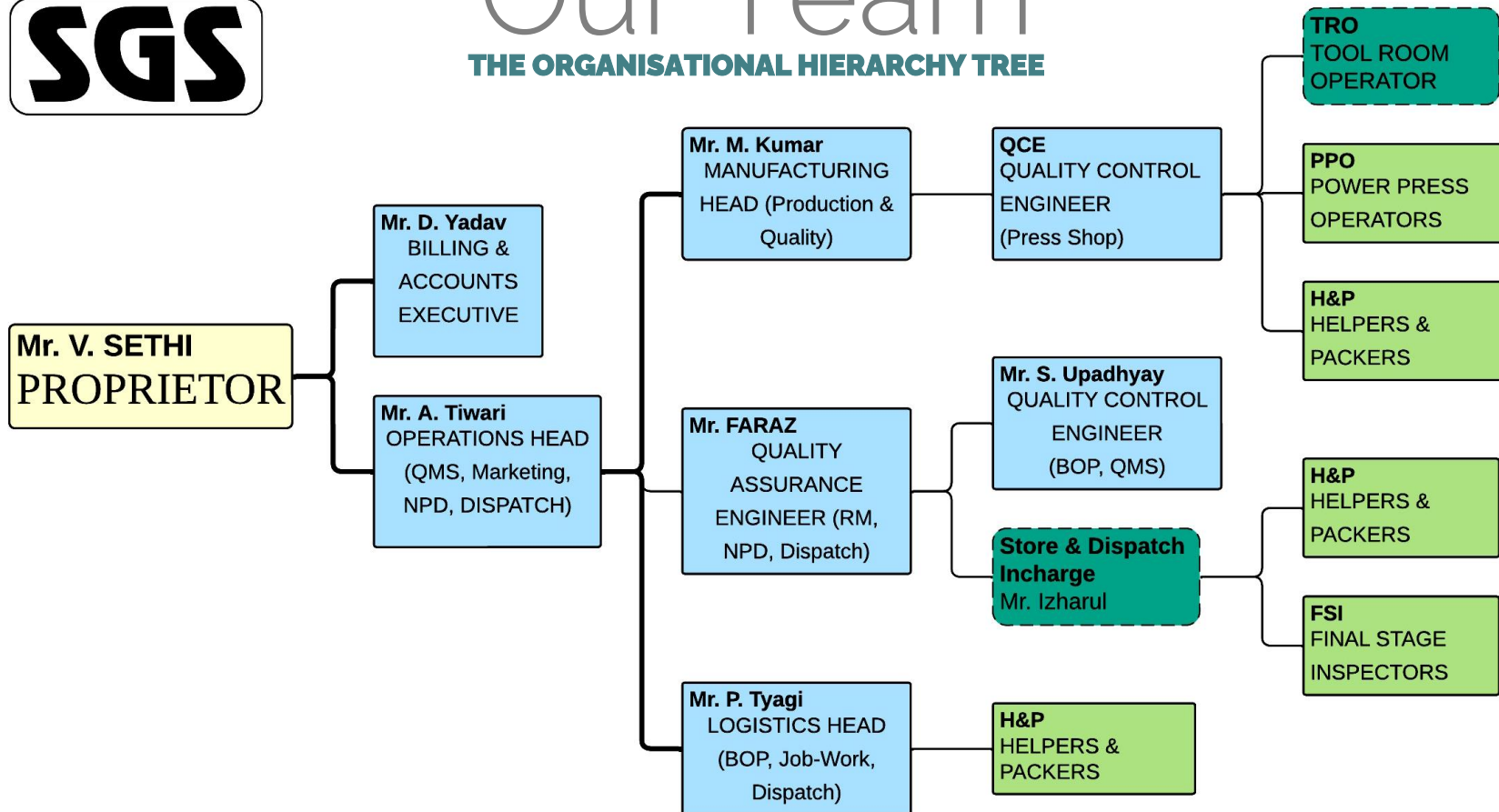
# Our Prestigious Clientele

**MORE QUALITY ALONG WITH QUANTITY; ON-TIME EVERY-TIME**



# Our Team

## THE ORGANISATIONAL HIERARCHY TREE



# MANUFACTURING MACHINERY

**PRODUCING PERSISTENT QUALITY IN QUANTITY**



RANGES FROM 05 TON TO 70 TON WITH HIGH QUALITY & EFFICIENT PRODUCTION



AVAILABLE AT BOTH SITES FOR RESPONSIVE TOOLING DEVELOPMENT & MAINTENANCE



SUPPORTING MACHINERY AVAILABLE FOR EFFICIENT TOOLING MANAGEMENT



EASE OF HANDLING & TOOLING MOVEMENT FOR DEVELOPMENT & SETUP PURPOSES



# INSPECTION INSTRUMENT

**FEW OF OUR TOOL TO ENSURE THE BEST OF QUALITY IN PRODUCTS**



**01  
DIGITAL  
HEIGHT GAUGE**



**02  
ROCKWELL  
HARDNESS TESTERS**



**03 SURFACE PLATES  
WITH  
A V-BLOCK SET**



**04  
DIGITAL  
WEIGHING SCALES**

# INSPECTION INSTRUMENT

**FEW OF OUR TOOL TO ENSURE THE BEST OF QUALITY IN PRODUCTS**



**08 DIGITAL  
CALLIPERS**

**01 DIGITAL  
MICROMETER**



**01 POINT  
MICROMETER**



**03 MANUAL  
MICROMETER**



**02 MANUAL  
HEIGHT GAUGE**

# OUR PRODUCTS

## A FEW OF OUR WIDE VARIETY OF ITEMS TO OUR PRESTIGIOUS CLIENTELE



### **BOLTS**

A wide variety of bolts, M10 x 1.5, M12 x 1.25 to cite a few are made from best quality material.

The bolts undergo proper heat treatment & surface treatment to ensure longevity.



### **PIN**

An array of Pins of different shapes & sizes are packed along with various items in Kit Sets. The Pins are made from best Quality EN8 / EN8D material which is Third Party Inspected on regular basis by the Quality team to ensure it's conformity to the standards.



### **WEAR SENSOR**

One of the Wide Variety (over 70 types) of Wear Indicators / Sensors supplied to Various Customers.

High Quality Spring Steel is used to ensure proper Life of the Sensors.



### **WASHER**

One of the Three types of Washer being made In-House, Wave Washer & Plain Washer being the other two.

Highly efficient Heat Treatment & Zn Plating White Passivation along with Hydrogen De-Embrittlement is done.

# KIT SET

**ONE OF THE OVER 50 TYPES OF KIT SETS**



## **KIT SET**

A COMPLETE SET OF MULTIPLE ITEMS RANGING FROM PINS, RUBBER CAPS TO SPRING STEEL CLIPS & HRC PLATES.

THE KIT SET IS FOR SPARES REPLACEMENT IN FOUNDATION BRAKES USED IN HEAVY VEHICLES ALL OVER EUROPE & AMERICA

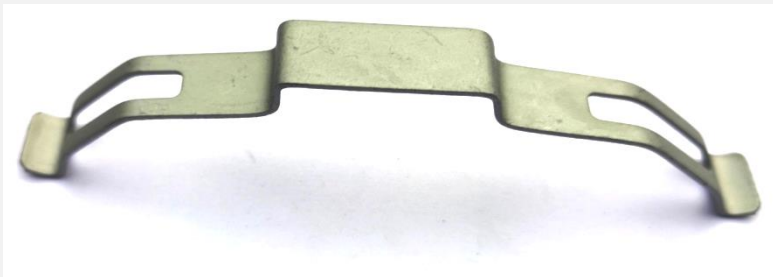
# KIT SET

A FEW MORE OF MANY



# CLIPS

**A SHEET METAL PORTFOLIO FULL OF VARIETIES**



**GEOMET(Zn FLAKE) COATED  
SPRING STEEL CLIP**



**TWO DIFFERENT TYPES OF HARDENED & Zn PLATED CLIPS**



**HRC BRACKET**

# BRACKETS

## OEM COMPONENTS



A Wide Variety of HRC & CRC Brackets being Supplied to Tier I Manufacturers of Maruti Suzuki India Limited & other Automobile Manufacturers



# HEAVY DUTY

**KIT SET CHILD PARTS TO MAT GROUP FOR AIR DISC BRAKES**



**ROD**



**ROD WITH ROTATING BUSH**



**PLATE**



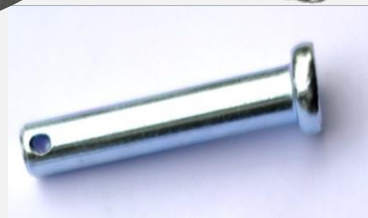
# BRACKETS & BEAMS

**MORE OEM ITEMS**



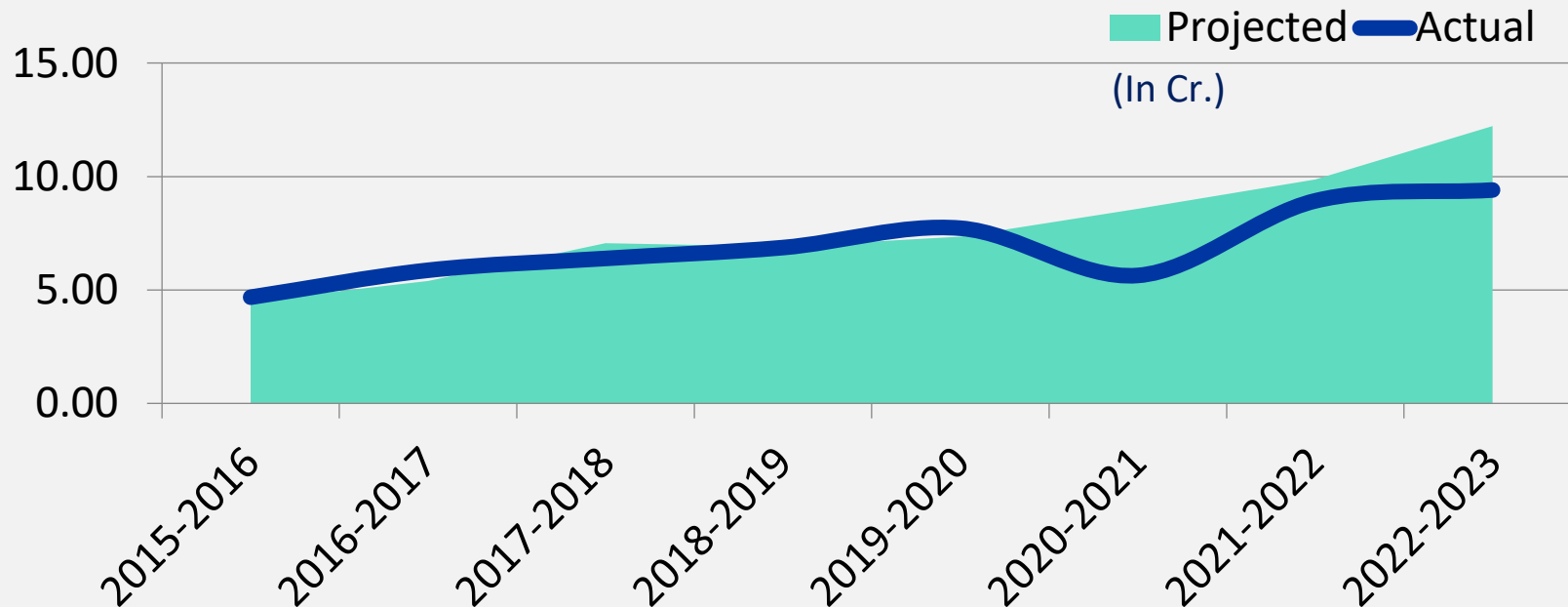
# And A FEW MORE...

**WE DON'T HOLD BACK**



# Figures Tell the Story

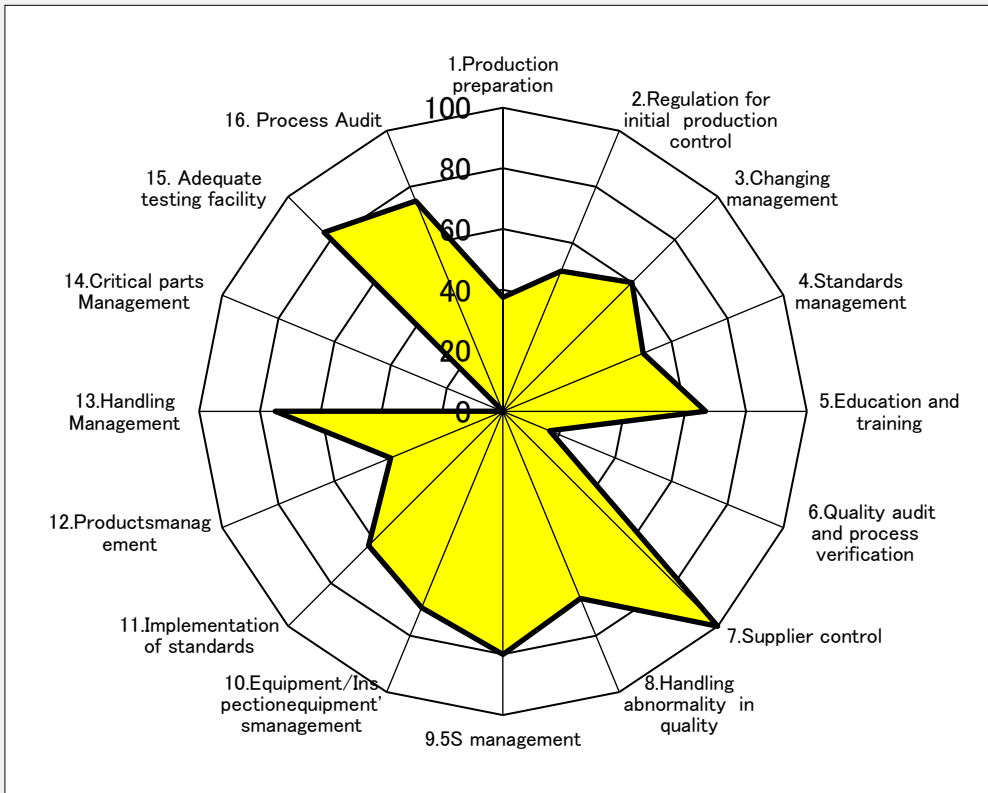
## SALES TURNOVER IN CRORES



Pictures may speak much for itself, but chart does so with details. As represented here, SGS Engineering Works always kept a strong Target of Sales Projection & abides by it Year-on-Year.

# UP TO THE MARK

## CERTIFICATIONS






## CERTIFICATE

The Certification Body  
of TÜV SÜD Management Service GmbH  
certifies that

**SGS ENGINEERING WORKS**  
Shed No. 82-C, HSIDC Industrial Estate, Sector-31, Faridabad  
Haryana - 121003  
India

has established and applies  
a Quality Management System for

**Manufacturing of Sheet Metal components**  
(without Product Design as per Chapter 8.3).

An audit was performed and has furnished proof  
that the requirements according to

**IATF 16949**  
First Edition 2016-10-01

are fulfilled.  
Issue date: 2022-07-18  
Expiry date: 2025-07-17

Certificate Registration No.: 12 111 58490 TMS  
IATF Certificate No.: 0453944  
Part of the certificate is an appendix.



Head of Certification Body  
Munich, 2022-07-18

Page 1 of 2

TÜV SÜD Management Service GmbH • Zertifizierungsstelle • Rüdigerstrasse 57 • 80339 München • Germany  
[www.tuev-sued.de/certificate-validity-check](http://www.tuev-sued.de/certificate-validity-check)



# PRINCIPLES

# GUIDE TO FUTURE

## OUR VISION, MISSION, CORE VALUES & QUALITY MODEL

### VISION

To manufacture components of international standards, to be customer focused and globally competitive through better quality, latest technology & continuous innovation and upgradation.

### MISSION

To deliver products and services with superior performance to ensure total customer satisfaction in Quality, Cost & Delivery by adopting best practices and work ethics.

To encourage people's ownership, empowerment and working under team structure.

### CORE VALUES

- Customer's Satisfaction & Delight
- Excellence in Quality
- Concern for the Environment & the Community
- Value for Money
- Passionate about driving excellence – Product, Process, Person
- To provide a safe work place

### QUALITY MODEL

- Understanding Customer Requirements
- Customer Intensive Procurement
- Customer Intensive Processes
- Synchronized Zero Defect Delivery

# POLICIES

# GUIDE TO FUTURE

## QUALITY POLICY & OBJECTIVES & EHS POLICY

### QUALITY POLICY

All employees are committed to meet and enhance Total Customer Satisfaction by timely delivery of defect free components and conforming adherence to customer's schedules through achieving Quality objectives, Employee Awareness and Training , adherence to Quality Management Systems & Continual Improvements.

### QUALITY OBJECTIVES

- To improve in sales turnover.
- To improve in customer satisfaction.
- To minimize the customer complaints.
- To minimize the internal & customer's rejections.
- To improve in delivery performance.
- To improve employees awareness through trainings.
- To ensure statutory & regulatory requirements.

### ENVIRONMENT, HEALTH & SAFETY(EHS) POLICY

We at SGS Engineering Works Are committed to maintain a high level of EHS performance during manufacturing of our parts :-

- Consistent implementation of EHS Management System.
- Compliance to applicable legal and other requirements.
- Concern for the environment & the community.
- Continual improvement in prevention of pollution & hazards and resource conservation in our processes.





# DEDICATED TEAM AT WORK







# UNIT I



**Shed No. 82-C, HSIDC, Sector-31, Faridabad, Haryana-121003, INDIA**

The Manufacturing Unit was purchased in 2003 to suffice growing demand for Spring Steel Child Parts for Brake Assembly.

Construction was completed on I Floor to increase space for Final Stage Inspection & Stores in the Year 2018.

The Plant currently houses 12 Power Presses for Production, along with Surface Grinders & Drills for Tool Room.

On the I Floor is the Final Inspection Area along with space for Packing & Dispatch of the Material.

Offices on both floors provide ample space for Staff along with Conference Room.

Storage of Raw Material is done on Ground Floor besides Press Shop Area. Storage of Items prior to dispatch is done on I Floor.

# TOOLING

LOTS OF TOOLS FOR LOTS OF COMPONENTS



With more than 300 different Sheet Metal Components developed, a lot of Press Tools are stored & regularly maintained In-House along with expertise from Out Source Supplier specialised in the Field of Tool Manufacturing, Repairing, Heat Treatment, Raw Material Suppliers' etc. So as to ensure complete Customer Satisfaction

# STORES

**MATERIAL ALWAYS READY**



A Delicate balance is always required when keeping Inventory, be it of Raw Materials, Semi-Finished or Fully Processed Components. At SGS we strive to ensure that this delicate balance <sup>is</sup> always maintained of delivering material on time against the cost of keeping Inventory, be it Monetary or otherwise.

# UNIT I

## A GLIMPSE INSIDE

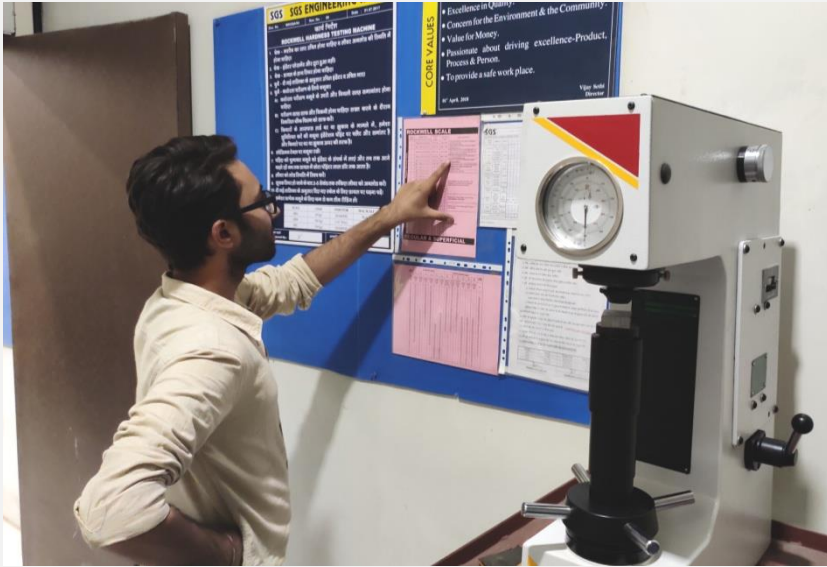
### Staff Office: First Floor

For ample working space for the team of dedicated staff members, Offices are available at both the Ground Floor & First Floor of both the units. Also available are the Conference Rooms on the First Floor for the team huddle to carry out thought provoking, well informed & discussed solutions for the betterment of the organisation



# UNIT I

A GLIMPSE INSIDE



INSTRUMENTS & INSTRUCTIONS

# UNIT I & II

## VISUAL CONTROLS

WORK INSTRUCTIONS-  
for systematic & proper  
functioning from the  
grassroots level



AREA CONTROL BOARD-  
Visual Control of all Regular  
Data from Change Control to  
various check sheets & more

# UNIT II

**Shed No. 28-B, HSIIDC, Sector-31,  
Faridabad, Haryana-121003, INDIA**

Once the primary Manufacturing Site for SGS, the Unit was purchased to move out of rented site in Sector-27, Faridabad in 2003.

ISO Certification was achieved by SGS for first time in the same year.

The Plant currently houses 10 Power Presses for Production, along with Surface Grinders & Drills for Tool Room.

On the I Floor is the Office Space(besides the one on G. Floor), Conference Room, ISC Room, Records Storage Area, 4M Hold Area & Standard Room to sustain the Green status provided by Maruti Suzuki India Ltd. to SGS.

All the manufacturing processes & stores in this unit are housed on Ground Floor.



# UNIT II

## A GLIMPSE INSIDE



- Re-Work Area (Caged & with Lock to prevent Part-Mixing)



PRESS SHOP



# UNIT II

## A GLIMPSE INSIDE



The Three Gates:  
CONFERENCE ROOM  
STANDARD ROOM  
ISC & STORAGE AREA



CONFERENCE ROOM:  
For the talk of the Hour



Inspection Instrument

# UNIT II

## A GLIMPSE INSIDE

Clockwise from Right:

- Stores (F.G. & R.M.)
- Pathway to Press Shop
- Standard Room





“Don't Find Fault  
Find A Remedy”

**-HENRY FORD, Father of Assembly Lines**

# About Us

## THE ESSENTIALS



- We Are: • SGS ENGINEERING WORKS
- The Proprietor: • Mr. VIJAY SETHI
- Here We are: • Shed No. 82-C & 28-B, HSIIDC, Sector-31, Faridabad, Haryana-121003
- Reach Us at: • 0129-4109259; [sgsengg1@gmail.com](mailto:sgsengg1@gmail.com)
- Contact Us From: • 09:30 to 17:00
- Our QMS Certification: • IATF 16949:2016 & ISO 9001:2015
- And the GSTN: • 06ABJPS2308H1ZP
- Also the UAN: • HR03B0004641
- MSME says we are a: • Small Manufacturing (Category B) Enterprise

# THANK YOU

NOTE: Information given in the Portfolio is for reference purpose only. For any enquiry or Information do feel free to contact us on the details mentioned on previous sheet (About Us: The Essentials).